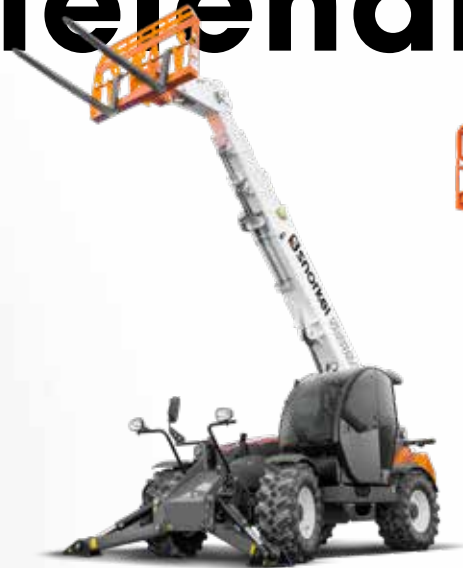


# Snorkel aerial lifts & telehandlers



PRODUCT RANGE OVERVIEW

**Snorkel**<sup>™</sup>

**NEW**



Snorkel SL30RTE

**Snorkel is a leading global manufacturer of aerial work platforms. Our comprehensive range of aerial lifts provides safe and efficient working at height, from 2 metres to 66 metres. We have the perfect solution for any application, from interior building maintenance through to the toughest construction job site.**

Founded by Art Moore in 1959, Snorkel has a proud 60 year heritage of finding practical solutions to safely working at height. Our success is built on staying true to our core values, which influence everything we do. Above all, we believe in maintaining 100% focus on our customers.

From our roots within the firefighting industry, Snorkel has always pushed the boundaries of design, and that spirit of innovation continues today. Snorkel is constantly finding new solutions to working at height and new ways to enhance the safety and productivity benefits delivered by mobile elevating work platforms.

Snorkel's philosophy is "keep it simple" – we manufacture robust, reliable machines that take you to wherever you need to be, in the most efficient and safe manner possible. We build aerial lifts that

meet your needs without complicating your working life; Snorkel lifts are simple to use, simple to maintain and simple to repair.

We work hard to stay closer to our customers - the global Snorkel team is augmented by a network of distributors and service agents across the world. Wherever you are, Snorkel can provide responsive, expert advice in your language, plus fast access to spare parts and product support.

With access to a vast portfolio of financing solutions, Snorkel offers a range of attractive options to enable you to purchase Snorkel machines, in a manner tailored to suit your individual business needs.

Find out more about our products and services at  
**[www.snorkellifts.com](http://www.snorkellifts.com)**



### **S3006P/S3008P/S3010P/S3210P**

Available in three heights, the S3006P, S3008P, S3010P and S3210P are simple, mini scissor lifts that can be pushed between jobs. These lightweight lifts can pass through a single doorway and are fitted with non-marking casters for easy movement, plus an auto-brake system that secures the lift when working at height. The new S3210P is rated for outdoor use providing a safe low level access solution for both interior and exterior tasks.



### **S3010E**

The self-propelled S3010E is ideal for internal facilities maintenance in large buildings. Compact dimensions and a zero inside turning radius make it suitable for working in tight spaces, and it is light enough to be carried in elevators. The S3010E can be driven at full height, and features proportional 'point & go' joystick controls for ease of use.



### **S3215L**

The lightweight S3215L electric scissor lift doesn't compromise on performance or durability. It delivers a working height of 6.6m, and can lift 305kg, yet weighs only 952kg. Sharing many features with Snorkel's electric scissor lift family, the S3215L blends the low floor loading benefits of a lightweight lift with the long working life of a full-size electric slab scissor lift.

## LIGHTWEIGHT SCISSOR LIFTS

Snorkel lightweight scissor lifts are designed to provide a safe solution to low level working at height, and where a low floor loading is required. These lifts offer an alternative to traditional low level solutions, such as ladders, scaffolding towers and podiums, delivering many additional safety and productivity benefits.

Available as push-around or self-propelled units, Snorkel lightweight scissor lifts are constructed from steel, and incorporate many of the same features and components as our larger electric scissor lifts, ensuring a long working life.

Suitable for use on construction jobsites, as well as in facilities maintenance applications, these lightweight lifts can be easily transported around multi-storey buildings in passenger elevators, thanks to their low weight and compact dimensions.

	S3006P	S3008P	S3010P	S3210P*	S3010E	S3215L
<b>Max. working height</b>	4.0m	4.5m	5.0m	5.0m	5.0m	6.6m
<b>Platform capacity</b>	240kg	240kg	240kg	240kg	227kg	305kg
<b>Stowed height</b>	1.7m	1.8m	1.8m	1.8m	1.8m	1.9m
<b>Overall length</b>	1.2m	1.2m	1.2m	1.2m	1.26m	2.1m
<b>Overall width</b>	0.75m	0.75m	0.75m	0.81m	0.77m	0.81m
<b>Weight</b>	310kg	350kg	370kg	470kg	495kg	955kg

\*Preliminary specifications – confirm at time of ordering.





### S3019E

The Snorkel S3019E has a stowed height of 1.76m, meaning it can easily pass through doorways without folding handrails. This all-electric lift features a low step-in height thanks to the patented sunken scissor stack that stows inside the chassis. The S3019E can lift up to 250kg to a platform height of up to 5.79m, and weighs just 1,581kg.



### S4740E

The new Snorkel S4740E is the only Snorkel electric scissor lift available with a choice of hydraulic or electric drive. Capable of reaching a working height of up to 14.0m and lifting up to 250kg, the battery-powered Snorkel S4740E delivers long-duty cycles between charges and comes equipped with a 1.21m roll-out deck extension as standard.

## ELECTRIC DRIVE SLAB SCISSOR LIFTS

Snorkel's line of electric drive slab scissor lifts are designed to be highly efficient, delivering long duty cycles between charges.

The Snorkel S3019E redefines the popular electric slab scissor lift. Featuring all electric drive and electric steering, this zero-emission lift has no hydraulics hoses, eliminating the risk of leaks. The revolutionary patented design includes a sunken scissor stack that stows entirely inside the chassis, delivering a low platform step in height, and a lower stowed height for passing through doorways without the need for folding guardrails.

Both the Snorkel S3019E and S4740E share many of the same features as Snorkel's hydraulic drive slab scissor lift family, including a roll-out extension deck, saloon-door style entry gates, and swing-out service trays.

	S3019E	S4740E*
Max. working height	7.79m	14.0m
Platform capacity	250kg	250kg
Stowed height	1.76m	2.56m
Stowed length	1.91m	2.3m
Overall width	0.77m	1.19m
Weight	1581kg	3100kg

\*Preliminary specifications – confirm at time of ordering.



#### **S3215E/S3219E**

The Snorkel S3219E is a compact and nimble electric scissor lift with a working height of 7.79m and a lift capacity of 250kg. It can be driven through a standard doorway, and can be used outdoors by one person. Sharing the same features, the smaller Snorkel S3215E delivers a working height of 6.6m, but can lift up to 272kg.



#### **S3220E/S3226E**

The Snorkel S3220E delivers a working height of up to 8.1m and a platform capacity of 409kg. Featuring a 0.91m roll-out telescopic extension deck and saloon-door style entry gates as standard, the S3220E can climb gradients of 25%. The S3226E utilizes the same chassis as the S3220E, and can lift 250kg to a working height of 9.9m.



#### **S4726E/S4732E/S4740E**

Offering the highest lift capacity in the Snorkel electric scissor lift family, these models are ideal for slab applications requiring additional capacity. The S4726E can lift an impressive 454kg to a working height of 9.8m, the Snorkel S4732E can lift 350kg to a working height of 11.8m, and the new S4740E, available with a choice of hydraulic or electric drive, can lift 250kg to a working height of 14.0m.



S3215E

S3219E

S3220E

S3226E

S4726E

S4732E

S4740E

## HYDRAULIC DRIVE SLAB SCISSOR LIFTS

Snorkel hydraulic drive slab scissor lifts are designed to deliver low total ownership costs. Packed with features that benefit both the owner and operator, Snorkel electric slab scissor lifts are setting a new standard within the industry.

A dual shear scissor stack and upsized pins provides increased rigidity, and the all-steel construction is robust and durable for a long working life. High quality components increase machine reliability, and upsized kingpins minimize the risk of damage on-site. A fixed upper control box reduces the risk of theft or damage, and includes an integrated power outlet for hand tools. Saloon-door style entry gates are fitted as standard for easy access into the platform, even when carrying tools.

Telescopic roll-out deck extensions maximize the working area, and twin side doors provide easy 'inside-out' access to key components, even when space is limited. Snorkel's smooth, proportional operating system gives you precise control where you need it most - and deep cycle batteries ensure your Snorkel electric scissor lift keeps working as long as you do.

	S3215E	S3219E	S3220E	S3226E	S4726E	S4732E	S4740E*
<b>Max. working height</b>	6.6m	7.79m	8.1m	9.9m	9.8m	11.8m	14.0m
<b>Platform capacity</b>	272kg	250kg	409kg	250kg	454kg	350kg	250kg
<b>Stowed height</b>	2.02m	2.11m	2.17m	2.3m	2.3m	2.39m	2.56m
<b>Overall length</b>	1.78m	1.78m	2.3m	2.3m	2.3m	2.3m	2.3m
<b>Overall width</b>	0.81m	0.81m	0.81m	0.81m	1.19m	1.19m	1.19m
<b>Weight</b>	1227kg	1614kg	2045kg	2045kg	2250kg	2693kg	3100kg

\*Preliminary specifications – confirm at time of ordering.



### **S2255RT/S2755RT**

The Snorkel S2255RT and S2755RT narrow diesel scissor lifts are specifically designed to work in constricted areas where a standard width lift would have difficulties. Designed to handle rough terrain with ease, the lifts have powerful 4 wheel drive and an oscillating rear axle. Both models are available with a bi-energy power source option, and are lightweight, enabling them to be towed on a trailer between jobs.



### **S2770RT/S3370RT/S3970RT**

Lightweight and compact, the S2770RT, S3370RT & S3970RT are ideal for outdoor work in confined spaces between buildings. With excellent ground clearance and an oscillating axle, they can tackle rough terrain with ease, and are equipped with auto level outriggers and a 1.2m roll-out deck extension as standard. All three models are available with a bi-energy power source option.



### **S2770RTE/S3370RTE/S3970RTE**

Delivering zero emissions without compromising performance, the new S2770RTE, S3370RTE and S3970RTE electric compact rough terrain scissor lifts offer excellent manoeuvrability. Powered by lithium-ion batteries, these lifts deliver less noise than a diesel scissor lift with long duty cycles between charges. With 4 wheel drive and outriggers as standard, these compact lifts can handle the toughest terrain, and be used indoors.

S2255RT  
 S2755RT  
 S2770RT  
 S3370RT  
 S3970RT  
 S2770RTE  
 S3370RTE  
 S3970RTE

## COMPACT ROUGH TERRAIN SCISSOR LIFTS

The Snorkel S-RT series is a full line of compact diesel-powered rough terrain scissor lifts. All lifts in the series deliver excellent deck space, load capacity and superb terrain capabilities - and they are all equipped with powerful four-wheel drive to handle rough terrain.

Snorkel compact scissor lifts are also available in bi-energy versions, for the ultimate job site flexibility – work on a building's exterior, then take the same machine indoors for fitting out. Switching to battery power can also help you meet increasing laws and regulations on noise and emissions.

Delivering zero emissions without compromising performance, the S2770RTE, S3370RTE and S3970RTE electric compact rough terrain scissor lifts offer excellent manoeuvrability and durability. Powered by long-lasting lithium-ion batteries, each lift delivers less noise than a conventional diesel lift with long duty cycles between charges.

	S2255RT	S2755RT	S2770RT	S3370RT	S3970RT	S2770RTE*	S3370RTE*	S3970RTE*
<b>Max. working height</b>	8.5m	10.1m	10.1m	12.0m	13.8m	10.1m	12.0m	13.8m
<b>Platform capacity</b>	420kg	300kg	580kg	450kg	350kg	580kg	450kg	350kg
<b>Stowed height</b>	2.35m	2.5m	2.61m	2.7m	2.95m	2.61m	2.7m	2.95m
<b>Overall length</b>	3.3m	3.3m	3.4m	3.4m	3.4m	3.4m	3.4m	3.4m
<b>Overall width</b>	1.45m	1.45m	1.8m	1.8m	1.8m	1.8m	1.8m	1.8m
<b>Weight</b>	2410kg	2750kg	2886kg	3620kg	3790kg	2800kg	3620kg	3790kg

\*Preliminary specifications – confirm at time of ordering.



#### **S9033RT/S9043RT/S9053RT**

The new Snorkel S9033RT, S9043RT and S9053RT large deck rough terrain construction scissor lifts measure up. Equipped with a spacious roll-out deck as standard, these scissor lifts offer excellent lift capacity. Superb terrain capabilities can easily handle tough jobsite conditions on powerful 4-wheel drive, and optional dual powered decks increase the working area further.



#### **S9031RT-HC/S9043RT-HC**

The new Snorkel S9031RT-HC and S9043RT-HC ultra-capacity rough terrain scissor lifts are ideal for heavy lifting with excellent off-road capability. A robust, heavy duty design delivers best-in-class lift capacity. With dual powered extension decks and an extra-wide pallet gate as standard, it is easy to work at height with tools and materials.



#### **S9056RT-HC/S9070RT-HC**

The new Snorkel S9056RT-HC and S9070RT-HC ultra-capacity rough terrain scissor lifts are durably designed to carry the load. Equipped with dual powered extension decks and hydraulic outriggers with automatic leveling, these models offer the largest capacity in the family with superb rough terrain capability, and an extra wide pallet gate for loading materials.

S9033RT  
 S9043RT  
 S9053RT  
 S9031RT-HC  
 S9043RT-HC  
 S9056RT-HC  
 S9070RT-HC

## HIGH CAPACITY ROUGH TERRAIN SCISSOR LIFTS

Heavy tasks are easy for Snorkel's new line of large deck, rough terrain construction scissor lifts. A spacious platform can be expanded with dual extension decks to maximize the working area on the Snorkel S9033RT, S9043RT and S9053RT models.

Featuring the highest lifting capacity deck in Snorkel's line of rough terrain scissor lifts, the Snorkel S9031RT-HC, S9043RT-HC, S9056RT-HC and S9070RT-HC offer best-in-class lift capacity for heavy-duty tasks. As standard, an extra-wide 1.9m pallet gate makes it easy to load and carry tools and materials for working at height.

Powerful four-wheel drive on the full line delivers superb terrain capabilities for a durable performer in tough job conditions, ideal for construction and rental applications.

	S9033RT*	S9043RT*	S9053RT*	S9031RT-HC*	S9043RT-HC*	S9056RT-HC*	S9070RT-HC*
<b>Max. working height</b>	11.8m	15.1m	17.9m	11.4m	15.1m	19.1m	23.3m
<b>Platform capacity</b>	1134kg	680kg	680kg	1814kg	1587kg	1134kg	907kg
<b>Stowed height</b>	2.97m	2.99m	3.2m	2.77m	2.77m	3.09m	3.43m
<b>Overall length</b>	3.68m	3.68m	3.68m	4.87m	4.87m	4.87m	4.87m
<b>Overall width</b>	2.28m	2.28m	2.28m	2.28m	2.28m	2.28m	2.28m
<b>Weight</b>	5443kg	6350kg	7484kg	6803kg	7711kg	9072kg	11566kg

\*Preliminary specifications – confirm at time of ordering.





### SL26RT/SL30RT

The SL26RT provides a safe working load of 680kg and a working height of 10.0m. The 1.72m x 3.66m platform comes with a 0.91m extension for additional reach. The SL30RT provides a working height of up to 11.0m, on a spacious 1.72m x 4.23m deck, with lift capacity of 590kg. Both diesel models can be driven at full height, even on compound slopes, such as car park ramps, and have impressive 4 wheel drive capabilities.



### SL26RTE/SL30RTE

The zero emission, lithium-ion Snorkel SL26RTE and SL30RTE deliver quiet yet powerful performance, with impressive 4-wheel drive capabilities and a long duty cycle between charges. Featuring automatic self-levelling on gradients without outriggers, the electric Speed Level can be driven at full height and climbs compound gradients up to 50%. The SL26RTE features more compact dimensions, and comes with a roll-out deck extension.

## SPEED LEVELS

When other machines can't make the grade, you can rely on the Snorkel Speed Level. The platform can automatically self-level while occupied on slopes up to 13° from side-to-side and up to 9° from front-to-back without outriggers. Combined with superb ground clearance, excellent lift capacity and powerful 4-wheel drive, the Snorkel Speed Level can handle the toughest jobsite conditions.

The new electric versions feature lithium-ion battery power for quiet, long-lasting performance with rough terrain capabilities. High efficiency maintenance-free batteries allow for higher torque and higher speeds, and can be driven on slopes at full height, while meeting jobsite requirements for zero emissions and noise reduction.

	SL26RT	SL30RT	SL26RTE	SL30RTE
Max. working height	10.0m	11.0m	10.0m	11.0m
Platform capacity	680kg	590kg	680kg	590kg
Stowed height	2.6m	2.6m	2.6m	2.6m
Overall length	3.79m	4.3m	3.79m	4.3m
Overall width	2.13m	2.13m	2.13m	2.13m
Weight	3500kg	3400kg	3500kg	3450kg



#### **UL25/UL32/UL40**

The robust and compact UL series push-around mast lifts easily pass through a standard doorway and offer a small outrigger footprint. Our telescopic Girder Lock mast delivers safe and stable working heights of up to 14.1m. Non-marking casters and an easy-loader system for transport come as standard.



#### **TM12**

The original self-propelled telescopic mast lift remains popular the world over for its versatility and durability. The Snorkel TM12 can be driven through standard doorways and carried in passenger elevators - yet will still lift two people with tools to a safe working height of 5.6 metres.



#### **TM12E/TM16E**

The TM12E and TM16E feature an electric drive system that provides longer duty cycles than the hydraulic drive version and delivers improved efficiency on the jobsite. With a zero inside turning radius, the TM12E and TM16E are ideal for working in confined spaces, and can easily pass through a standard doorway and travel in an elevator. The standard 0.5m roll-out deck extension provides additional reach.

## MAST LIFTS

Designed for contractors and facilities maintenance professionals, Snorkel mast lifts are lightweight, portable work platforms. Snorkel's telescopic Girder Lock mast design, utilized in the UL range, delivers superb stability and reach coupled with excellent lift capacity.

Where the convenience of a self-propelled unit is preferred, the Snorkel TM12 provides the ideal telescopic mast lift solution for most applications. The hydraulic drive TM12 can be driven through standard interior doorways and carried in passenger elevators - yet will still lift two people with tools. The TM12 is also now offered as the TM12E and TM16E with electric drive for increased efficiency on the jobsite.

	UL25	UL32	UL40	TM12	TM12E	TM16E
Max. working height	9.6m	11.7m	14.1m	5.6m	5.65m	6.87m
Platform capacity	159kg	136kg	136kg	227kg	227kg	227kg
Stowed height	1.99m	2.51m	2.9m	1.62m	1.7m	1.98m
Overall length	1.26m	1.32m	1.32m	1.34m	1.37m	1.37m
Overall width	0.74m	0.74m	0.74m	0.76m	0.76m	0.76m
Weight (AC)	390kg	435kg	470kg	-	-	-
Weight (DC)	420kg	465kg	500kg	830kg	840kg	1105kg



### **MB20J/MB26J**

The ultra-narrow self-propelled MB-series provides a superb working envelope in very confined interior spaces. Ideal for applications in tight spots which require “up and over” capabilities, the MB20J and MB26J both deliver 360° mast rotation, with added outreach from the articulating jib.



### **A38E**

Lightweight but durable and reliable, the A38E offers class-leading performance, with a working height up to 13.5m and up to 6.1m of outreach. The up-and-over articulated boom design provides the operator with a superb working envelope, and now features powered platform rotation and Snorkel Guard™ as standard.



### **A46JE**

This two-wheel drive, battery-electric version of the A46JRT is a versatile boom lift capable of working to heights up to 16.0m. With a working outreach of 7.35m and a jib length of 1.5m, this self propelled boom is a highly versatile performer. The spacious 1.83m x 1.0m platform can lift two people with tools and offers powered 160° rotation.



## ELECTRIC BOOM LIFTS

Snorkel's industry-leading A-series electric articulating boom lifts combine superb manoeuvrability with clean and quiet operation, delivering working heights of up to 16.0m from zero emission, battery-powered machines.

Designed for warehouse and retail environments, our MB-series of versatile mast boom lifts are perfect for stock picking and for working at height in narrow store aisles, but equally at home in industrial maintenance applications.

All Snorkel electric boom lifts with working heights above 13.0m are equipped as standard with Snorkel Guard™ secondary guarding system.

	MB20J	MB26J	A38E	A46JE
Max. working height	8.1m	9.8m	13.5m	16.0m
Platform capacity	215kg	215kg	215kg	227kg
Stowed height	1.98m	1.98m	2.0m	2.0m
Overall length	2.41m	2.8m	4.1m	5.6m
Width	0.81m	1.0m	1.5m	1.7m
Weight	2590kg	2660kg	3880kg	6486kg



#### **A46JRT**

This fast and powerful four-wheel drive rough terrain lift is a leader in its class, delivering a working height of up to 16.3m and outreach of 7.35m. Designed for manoeuvrability in tight spaces, the A46JRT has an inside turning radius of just 800mm - and the boom operates with zero tail swing. The spacious 1.83m x 1.0m platform can lift two people with tools and the 1.5m jib offers additional flexibility.



#### **A62JRT**

The Snorkel A62JRT offers a tight inside turning radius, thanks to its optimized two-wheel steering and zero tail swing. Areas where this lift excels include a maximum working height of 20.8m and "up and over" clearance at 9.0m. It also has the largest platform in its class and a very compact length when stowed for transport, at 8.5m. The oscillating front axle keeps all four tyres in contact with the ground, whether the boom is stowed or elevated.



#### **AB80J/AB85J**

The AB85J is the largest model in Snorkel's articulated boom range, with a working height of 27.7m and outreach of up to 18.8m. The superb "up and over" reach combined with a rotating jib, provide excellent aerial manoeuvrability while 4 wheel drive and 4 wheel steer make it a great performer on any job site. The AB80J provides a working height of 26.4m and shares all the features of the AB85J, minus the rotating jib.

## ARTICULATING BOOM LIFTS

Designed for tough job sites, Snorkel's family of articulating boom lifts combine superb manoeuvrability with power and precision. With many class-leading features, these lifts deliver working heights of up to 27.7m and lift capacity for two people plus tools.

Snorkel's articulated boom lifts provide the ultimate working envelope, including superb "up and over" capabilities – and articulated jibs come as standard. A smooth, proportional operating system gives you precise control where you need it most. Designed for a long and productive working life, all Snorkel articulated booms utilize hydraulics and relay controls, making them incredibly easy and low-cost to service and repair.

All Snorkel articulating boom lifts are equipped as standard with Snorkel Guard™ secondary guarding system.

	A46JRT	A62JRT	AB80J	AB85J
<b>Max. working height</b>	16.3m	20.8m	26.4m	27.7m
<b>Platform capacity</b>	227kg	227kg	227kg	227kg
<b>Stowed height</b>	2.16m	2.6m	2.9m	2.9m
<b>Stowed length</b>	5.7m	8.6m	9.8m	12.5m
<b>Width</b>	2.1m	2.4m	2.6m	2.6m
<b>Weight</b>	7540kg	10659kg	16730kg	17500kg



#### **400S/460SJ**

The Snorkel 400S telescopic boom lift delivers a working height of up to 14.2m and outreach of 10.1m. For additional flexibility, the 460SJ is the same machine with an added 2.0m jib boom. The 460SJ delivers a working height of up to 16.0m and outreach of 12.8m. Designed for construction sites, the 400S and 460SJ deliver up to 50% gradeability thanks to powerful four wheel drive and standard oscillating axle.



#### **600S/660SJ**

The Snorkel 600S telescopic boom provides a maximum working height of 20.3m, and is also available as the 660SJ with a 2.0m jib boom for additional flexibility. The 600S and 660SJ feature Snorkel's innovative 2.44m x 0.91m tri-entry platform, and all proportional boom functions, including jib and platform rotate. The 660SJ can be stowed to just 8.5m length for transport.



#### **600S/660SJ ALL-TERRAIN**

Designed with a full-time active oscillating axle, the new optional 'All Terrain' system available on the Snorkel 600S and 660SJ models offers a smooth driving experience and excellent gradeability from four independent rubber tracks. The lifts can climb gradients up to 45%, and traverse uneven terrain without sinking into loose sediment, soft soil, sand, snow and mud.

## MID-SIZE TELESCOPIC BOOM LIFTS

Snorkel's mid-size telescopic boom lifts are designed for tough job sites and are built to last. Powerful diesel engines, superb ground clearance and high torque drive motors combine to deliver excellent rough terrain performance. We engineer simplicity, delivering robust aerial lifts that are easy to operate and easy to service or repair, utilizing hydraulics and relay controls.

The Snorkel 400S, 460SJ, 600S and 660SJ models are designed with a common chassis helping to improve service engineer expertise and minimizing spare parts inventory. All Snorkel telescopic boom lifts are equipped as standard with Snorkel Guard™ secondary guarding system.

A new optional 'All Terrain' track system available on the Snorkel 600S and 660SJ models enhances performance on difficult terrain. The wider footprint delivers less ground pressure than wheeled units, and turf-friendly rubber tracks can traverse soft and sensitive environments, thanks to increased traction.

	400S	460SJ	600S	660SJ	600S ALL TERRAIN*	660SJ ALL TERRAIN*
<b>Max. working height</b>	14.2m	16.0m	20.3m	22.1m	20.6m	22.4m
<b>Platform capacity</b>	454kg**	272kg	454kg**	272kg	454kg**	272kg
<b>Stowed height</b>	2.38m	2.38m	2.52m	2.52m	2.64m	2.64m
<b>Stowed length</b>	7.57m	8.76m	9.2m	10.5m	9.2m	10.5m
<b>Width</b>	2.31m	2.31m	2.46m	2.46m	2.46m	2.46m
<b>Weight</b>	7135kg	7829kg	11430kg	12303kg	12097kg	13050kg

\*Preliminary specifications – confirm at time of ordering. \*\*Restricted envelope





#### **TB80/TB86J**

The Snorkel TB80 telescopic boom lift delivers a working height of 26.4m and outreach of 21.7m. Engineered for construction sites, four wheel drive comes as standard. For additional flexibility, we offer the TB86J, the same machine with a 2.0m jib, providing a working height of 28.2m and outreach of 23.9m.



#### **TB120/TB126J**

The Snorkel TB120 provides a maximum working height of 38.6m and outreach of up to 18.9m. Engineered for construction sites, with powerful four wheel drive as standard, along with a fixed front axle and extendable rear axle. For additional flexibility, we offer the same machine with a 2.0m jib, providing a working height of 40.4m and outreach of 19.2m.

## LARGE TELESCOPIC BOOM LIFTS

Built for vertical and horizontal outreach, Snorkel's telescopic boom lifts are designed for tough job sites and are built to last. Powerful diesel engines, superb ground clearance and high torque drive motors combine to deliver excellent rough terrain performance.

We engineer simplicity, delivering robust aerial lifts that are easy to operate and easy to service or repair, utilizing hydraulics and relay controls.

All Snorkel telescopic boom lifts are equipped as standard with Snorkel Guard™ secondary guarding system.

	TB80	TB86J	TB120	TB126J
Max. working height	26.4m	28.2m	38.6m	40.4m
Platform capacity	227kg	227kg	227kg	227kg
Stowed height	2.9m	2.9m	3.0m	3.2m
Stowed length	11.8m	11.5m	12.9m	13.6m
Width	2.6m	2.6m	2.6m	2.6m
Weight	17092kg	18615kg	17917kg	19000kg

**NEW**

**Snorkel 2100SJ**

**THE WORLD'S  
LARGEST  
SELF-PROPELLED  
TELESCOPIC  
BOOM LIFT**

Snorkel 2100SJ





**NEW**

2100SJ

MEGA TELESCOPIC BOOM LIFTS

## MEGA TELESCOPIC BOOM LIFTS

The new Snorkel 2100SJ is the world's largest self-propelled telescopic boom lift. Reaching new heights, this mega telescopic boom lift features a 5-section boom with outstanding horizontal outreach of 30.5m, and a 9.1m jib boom offering excellent up-and-over capabilities.

Robust 4-wheel drive and five steering modes deliver superb rough terrain performance with a tight inside turning radius for excellent manoeuvrability around the jobsite. Its innovative patent pending. Static axle transformation and narrow wheelbase provide stability on the job and ease of transportation. Patent pending secondary upper controls provides ultra-precise positioning of the platform, enabling the operator to face the direction of travel, which is ideal when working close to sensitive structures or materials, such as glass facades.

### 2100SJ

The new Snorkel 2100SJ is Snorkel's largest diesel telescopic boom lift with multiple, industry-first patented design features that benefit both the operator and owner. With an industry-leading maximum working height of 66.0m, this self-propelled boom lift also features an impressive maximum outreach of up to 30.5m. Capable of lifting up to 454kg\*\*, the 2100SJ has a stowed width of just 2.5m and a transport length of 14.9m.

### 2100SJ\*

<b>Max. working height</b>	66.0m
<b>Platform capacity</b>	454kg**
<b>Stowed height</b>	3.0m
<b>Stowed length</b>	14.9m
<b>Transport width</b>	2.5m
<b>Weight</b>	36300kg

\*Preliminary specifications – confirm at time of ordering. \*\*Restricted envelope



### **TL37J**

The TL37J is a high specification towable lift that offers excellent value for money. The articulating boom provides a working height of 12.9m and up to 5.6m of outreach. A 1.3m jib with 130° working arc and powered platform rotation provides additional manoeuvrability. Fully proportional live hydraulic controls ensure the TL37J is both simple to use and easy to service or maintain.



### **TL39**

The TL39 is a tough yet compact articulating/ telescopic towable boom and offers a working height of 13.5m with 6.4m of outreach. Designed to be easy to tow between jobs, this compact and lightweight lift has a towing length of just 5.0m. Hydraulic outriggers are standard, with the option of auto-levelling.



### **TL49J**

This towable lift has a 16.7m articulating/ telescopic boom and a 130° jib that delivers a superb working envelope, providing class-leading outreach of 8.5 metres. Live hydraulic controls and heavy duty booms ensure the TL49J is a robust machine that is simple to operate, maintain and repair. A range of power options are available, including bi-energy.



# TOWABLE BOOM LIFTS

Snorkel towable booms lifts are high specification, rugged, reliable trailer mounted boom lifts that are very cost-competitive. The machines are easy and low cost to maintain and simple to operate. Towable with most cars and light commercial vehicles, these are high performance machines that deliver a great return on investment.

Most Snorkel towable boom lifts are available in a range of power options including petrol, diesel, electric and bi-energy. Options include air line to platform, friction drive assist and platform work lights.

	TL37J	TL39	TL49J
Max. working height	12.9m	13.5m	16.7m
Platform capacity	215kg	215kg	200kg
Stowed height	2.1m	2.01m	2.16m
Towing length	6.4m	5.0m	7.1m
Towing width	1.61m	1.61m	1.72m
Weight	1586kg	1680kg	2389kg



### SR626

The Snorkel SR626 is a compact rough terrain telehandler, designed to handle the toughest jobsites. At just 1.89m wide, this compact telehandler is ideal for working in confined spaces. It can lift up to 2,600kg and has a maximum lift height of up to 5.79m. Powered by a Yanmar diesel engine, the Snorkel SR626 has full-time 4-wheel drive performance and a fully enclosed ergonomic cab for maximum operator comfort.



### SR626E

The new Snorkel SR626E is the first compact rough terrain telehandler to be powered by lithium-ion batteries. This industry-first electric telehandler is based on the diesel-powered Snorkel SR626, yet is completely zero emission. Highly manoeuvrable, the SR626E features full-time 4-wheel drive for tackling rough terrain. It can be fully charged overnight using the on-board charger, or top-up charged as needed. An optional off-board fast charger is available.

## COMPACT ROUGH TERRAIN TELEHANDLERS

Snorkel's line of compact rough terrain telehandlers are highly versatile with excellent reach. Full-time 4-wheel drive and proportional joystick controls allow for tight manoeuvring. Made to multitask, the series can handle the toughest jobsites and navigate confined spaces with ease.

A new, industry-first lithium-ion electric version offers low noise with zero emissions for indoor and outdoor applications. Long-lasting, maintenance free lithium-ion batteries deliver reliable and durable performance in a compact design.

	SR626	SR626E**
Max. lift height	5.79m	5.79m
Lift capacity	2600kg	2600kg
Stowed height	1.93m	1.93m
Length to fork face*	4.19m	4.19m
Width	1.89m	1.89m
Weight	4700kg	4800kg

\*Length to fork face = length from carriage to counter weight. \*\*Preliminary specifications – confirm at time of ordering.



#### **SR1442**

The Snorkel SR1442 rough terrain telehandler delivers powerful performance. Designed for durability, this telehandler is fitted with powerful 4-wheel drive, crab steering and outriggers as standard. Rugged and robust, the SR1442 is ideal for construction and rental applications.



#### **SR1745**

The Snorkel SR1745 rough terrain telehandler easily handles heavy loads. Built to perform, this telehandler features powerful 4-wheel drive and a 3-section boom for extended reach. Outriggers and leveling capabilities come standard for sturdy performance on any jobsite.



**NEW**

#### **SR1065**

The new Snorkel SR1065 rough terrain telehandler offers robust reliability. A high lift capacity maximizes performance, and a compact design makes it manoeuvrable on the jobsite. Equipped with 4-wheel drive, power assisted steering and a frame leveling system, this telehandler delivers power and precision with great handling capacities.

SR1442

SR1745

SR1065

## ROUGH TERRAIN TELEHANDLERS

Snorkel telehandlers are robust, reliable, powerful and simple to operate. Like all Snorkel lifts, they are very easy to maintain and deliver a low total cost of ownership.

Featuring an ergonomically designed, fully-enclosed cab, available with air conditioning, Snorkel telehandlers deliver an intuitive experience for the operator, with superior visibility around the machine.

Powerful Tier 4 Final engines and fully automatic hydrostatic drive ensures maximum performance on the job, and proportional joystick controls deliver the ultimate in precision.

	SR1442	SR1745	SR1065
<b>Max. lift height</b>	13.5m	16.4m	9.5m
<b>Lift capacity</b>	4200kg	4535kg	6500kg
<b>Stowed height</b>	2.56m	2.56m	2.5m
<b>Length to fork face*</b>	6.45m	6.6m	6.45m
<b>Width</b>	2.3m	2.3m	2.3m
<b>Weight</b>	11150kg	12180kg	11090kg

\*Length to fork face = length from carriage to counter weight.





#### **ML12M/ML16M/ML20M**

Snorkel 'MLM' material lifts feature a narrow design and ultra-compact reduced mast height to easily navigate through doorways and tight spaces, without requiring a tilt-back system, making them ideal for industrial and warehouse applications where loads are moved throughout a facility.



#### **ML12C/ML18C/ML24C**

Snorkel 'MLC' material lifts models are designed for heavy-duty and construction applications. The ML12C has 4.0m of lift height with up to 340kg of load capacity while the largest model, the ML24C is capable of lifting up to 295kg at a 0.36m load centre to a maximum lift height of 7.4m.



## CONSTRUCTION & MINI MATERIAL LIFTS

Snorkel material lifts offer versatility, durability and best-in-class load capacity. With adjustable loading wheels and quick-fold stabiliser legs, they are easy to transport and are quick and simple to set-up.

Snorkel material lifts feature a dual-handle, shift-on-the-fly, two-speed winch for increased productivity when lifting loads, up to twice as fast as other material lifts on the market. A cable guard and heavy-duty non-marking casters are fitted as standard. The lifts utilise heavy-gauge aluminium extrusions and construction-grade cast metal cable pulleys for a long-working life and maximum return on investment.

The 'MLM' series are mini material lifts designed to easily pass through doorways. The 'MLC' series is designed to handle the demands of tough, construction applications.

	ML12M	ML16M	ML20M	ML12C	ML18C	ML24C
<b>Lift height – forks up</b>	3.8m	4.9m	6.0m	4.0m	5.6m	7.4m
<b>Max. load capacity*</b>	318kg	295kg	272kg	340kg	318kg	295kg
<b>Stowed height</b>	1.59m	1.59m	1.59m	2.2m	2.2m	2.2m
<b>Stowed length</b>	0.84m	0.88m	0.91m	0.85m	0.85m	0.85m
<b>Stowed width</b>	0.77m	0.77m	0.77m	0.77m	0.77m	0.77m
<b>Weight</b>	120kg	135kg	151kg	111kg	141kg	162kg

\*0.36m load centre



#### **ML5I/ML10I/ML15I**

For low level applications, the ML5I can lift up to 454kg to a height of up to 2.0m. Reaching higher, the ML10I can carry a load of up to 408kg to a maximum height of up to 3.4m, and the ML15I can handle materials up to 363kg to lift heights up to 4.8m. An optional straddle base accommodates larger pallets and retracts to fit through doorways.



#### **ML20I/ML25I**

Fitted with stabilizers with non-marking casters as standard, the ML20I and ML25I are the largest two models in the MLI range. Capable of handling loads up to 340kg, the ML20I can reach up to 6.2m, whereas the ML25I can reach heights up to 7.6m with loads up to 272kg. A spring-actuated locking system provides quick and easy deployment and stowage of the stabilizers.

## INDUSTRIAL MATERIAL LIFTS

Featuring a dual-handle, shift-on-the-fly, two speed winch as standard, Snorkel's industrial line of material lifts bring unrivaled durability and reliability to all types of material handling applications.

With five models, ranging from 2.0m to 7.6m, the Snorkel 'MLI' range is built tough, yet compact for easy navigation through narrow aisles and in tight spaces. Best-in-class load capacities maximize productivity on the job, while heavy-gauge aluminium extrusions and cast metal cable pulleys ensure a long working life.

	ML5I	ML10I	ML15I	ML20I	ML25I
<b>Lift height – forks up</b>	2.0m	3.4m	4.8m	6.2m	7.6m
<b>Max. load capacity*</b>	454kg	408kg	363kg	340kg	272kg
<b>Stowed height</b>	1.9m	1.9m	1.9m	1.9m	1.9m
<b>Stowed length</b>	0.85m	0.85m	0.85m	0.8m	0.8m
<b>Stowed width</b>	0.77m	0.77m	0.77m	0.77m	0.77m
<b>Weight</b>	89kg	106kg	122kg	150kg	167kg

\*0.36m load centre



**[www.snorkellifts.com](http://www.snorkellifts.com)**

## SNORKEL IS AT YOUR FINGERTIPS 24/7

Find a vast range of Snorkel resources available online, 24 hours a day, 7 days a week. Visit **[www.snorkellifts.com](http://www.snorkellifts.com)** for easy mobile access to sales, service and support.

## THE PLATFORM™

Access an extensive library of Snorkel technical publications, including interactive manuals and bulletins with The Platform™ - Snorkel's new portal for product support. Visit **[theplatform.snorkellifts.com](http://theplatform.snorkellifts.com)** to get started.

## THE TOOLBOX™

Direct from Snorkel's product experts, The Toolbox™ is the ultimate resource center for Snorkel owners and operators. Learn how to safely operate and maintain your Snorkel lift from an extensive library of instructional guides and videos on troubleshooting, servicing and more.

## ...AND MUCH, MUCH MORE.

Visit **[www.snorkellifts.com](http://www.snorkellifts.com)** to quickly find an authorized Snorkel dealer, use the equipment selector tool to identify what type of aerial lift you need, watch product feature videos, request quotes online, and much, much more.





Local Distributor:

CE Specification  
© Snorkel 2020

OV0820

Specifications subject to change without notice. Photos and diagrams in this brochure are for promotional purposes only. Refer to appropriate Snorkel operators manual for detailed instructions on the proper use and maintenance.

**Snorkel™**

Vigo Centre, Birtley Road  
Washington, Tyne & Wear  
NE38 9DA, UK

T +44 (0) 845 1550 057

F +44 (0) 845 1557 756

[www.snorkellifts.com](http://www.snorkellifts.com)